

The HPLC for Cannabis, Psychedelic Mushrooms and Related Compounds



IN-HOUSE POTENCY ANALYSIS FOR CANNABIS, CANNABIS PRODUCTS, MUSHROOMS, AND MUSHROOM-INFUSED PRODUCTS

The LightLab 3 PsyCanna Analyzer tests the potency of up to 18 cannabinoids, plus psilocybin, psilocin, AcO-DMT, and total tryptamines using high performance liquid chromatography. With LightLab 3 PsyCanna, quickly and easily test psychedelic mushrooms and mushroom-infused products, as well as cannabis plants, concentrates and edibles in-house or onsite. No technical or scientific expertise is required.

Key Features

- Built-in SOPs
- Customizable SOPs
- Factory calibrated w/ traceable standards
- 10-minute run time
- Generates COAs

SAMPLE TYPES

Psychedelics

- Dried Biomass
- Wet Biomass
- Gummies
- Chocolates
- Capsules
- Extracts
- Custom Modes

Cannabis

- Beverages
- Beverage Enhancers
- Gummies
- Baked Goods
- Chocolates
- Mints
- Hard Candies
- Taffy
- Pet Products
- Flower
- Biomass
- Nanoemulsions
- Young Plant
- Concentrates
- Processed Waste
- Tinctures
- Custom Modes

ANALYTES MEASURED

Psychedelics

- Psilocybin & Psilocin
- 4-AcO-DMT
- Total Active Psilocin
- Total Tryptamines

Cannabinoids

- Δ9-THC
- THC-A
- CBD
- CBD-A
- CBN
- CBG
- CBG-A
- CBN-A
- CBC
- CBC-A
- Δ8-THC
- Δ10-THC
- THCV-A
- THCV
- Δ9-THC-O
- Δ8-THC-O
- Δ9-THCP
- HHC

STRAIN SELECTION: Select strains that deliver the desired output and meet customer demand.

CULTIVATION CONTROL: Improve yields with adjustments to temperature, humidity, substrate, CO2 levels, or treatments.

DEGRADATION MANAGEMENT: Prevent degradation of target compounds from poor processing, drying or storage conditions.

QUALITY ASSURANCE: Measure analytes and characterize the chemical makeup of strains to ensure product consistency.

SUBSTRATE RECIPE OPTIMIZATION: Fine tune recipes, achieve fast pinning, reduce aborts, and maximize yields and potency.

EXTRACTION OPTIMIZATION: Optimize temperatures, soak time and solvent choice; understand biomass vs. output potency.

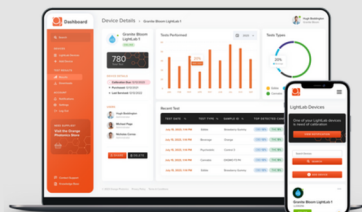
DOSAGE VERIFICATION: Quantify potency to ensure a consistent, accurately dosed and labeled end product.

SOURCING VALIDATION: Make informed buying decisions by confirming potency of biomass or extracts before purchase.

CERTIFICATE OF ANALYSIS

Scan the QR code to view a sample LightLab 3 Certificate of Analysis (CoA). Every LightLab 3 CoA bears a permanent QR code which provides an indelible record of the test. Scan the QR code on the CoA itself to view, download and share test results.





The easiest path toward applied testing data.

- Manage your LightLab 3 fleet performance.
- View sample details and test results.
- Share test results via text or email.
- View your complete test history.
- Compare and analyze test results.
- Download a CSV report.
- Generate and share Certificates of Analysis (CoAs).



Scan to see
sample test
results in
LightLab
Dashboard

LightLab 3 PsyCanna Analyzer Specifications

Dimensions/Weight	18.5 x 6.9 x 14.1 inches/13.5 pounds
Power Requirements	18V, 1.5A (120-240 AC Adapter included)
Battery Type	Lithium Ion, 14.8V 4400mAh, 8 hours run time, rechargeable
Interface	7" touch screen
Analytical Technique	Variable injection volume liquid chromatography with multiple wavelength UV detector
Result Units	%, mg/serving, mg/package, mg/g, mg/ml
Data Access	On-screen, LightLab Dashboard online, CSV, CoA, chromatogram, text, email; Wi-Fi capable, not required for operation
Detection Limit	Down to 6ppm, sample type and analyte dependent
Sample Preparation	Direct inject or simple solvent extraction, sample type dependent
Standard Operating Procedures	Automatically generated based on sample type, product presets
Products Measured	<u>Psychedelics</u> : Dried biomass, wet biomass, gummies, chocolates, capsules, concentrates, custom modes; <u>Cannabis</u> : Beverages, gummies, chocolates, baked goods, hard candies, mints, nanoemulsions, taffy, enhancers, plant, pet products, concentrates, biomass, young plant, processed waste, tinctures, isolate, custom modes
Standard Analytes	<u>Psychedelics</u> : Psilocybin (PCB), Psilocin (PCN), 4-ACO-DMT (Psilacetin), Total Tryptamines (TT), Total Active Psilocin (TAP); <u>Cannabis</u> : D9THC, THC-A, CBD, CBD-A, CBN, CBG, CBG-A, CBN-A, CBC, CBC-A, D8-THC, D10-THC, THCV-A, THCV
Terpenes	Total Terpenes (semi-quantitative)
Measurement Time	8.5 minutes, sample preparation 2-10 (sample type dependent)
Integration	Barcode reader, keyboard, scale
Warranty	1 year, extended options available